



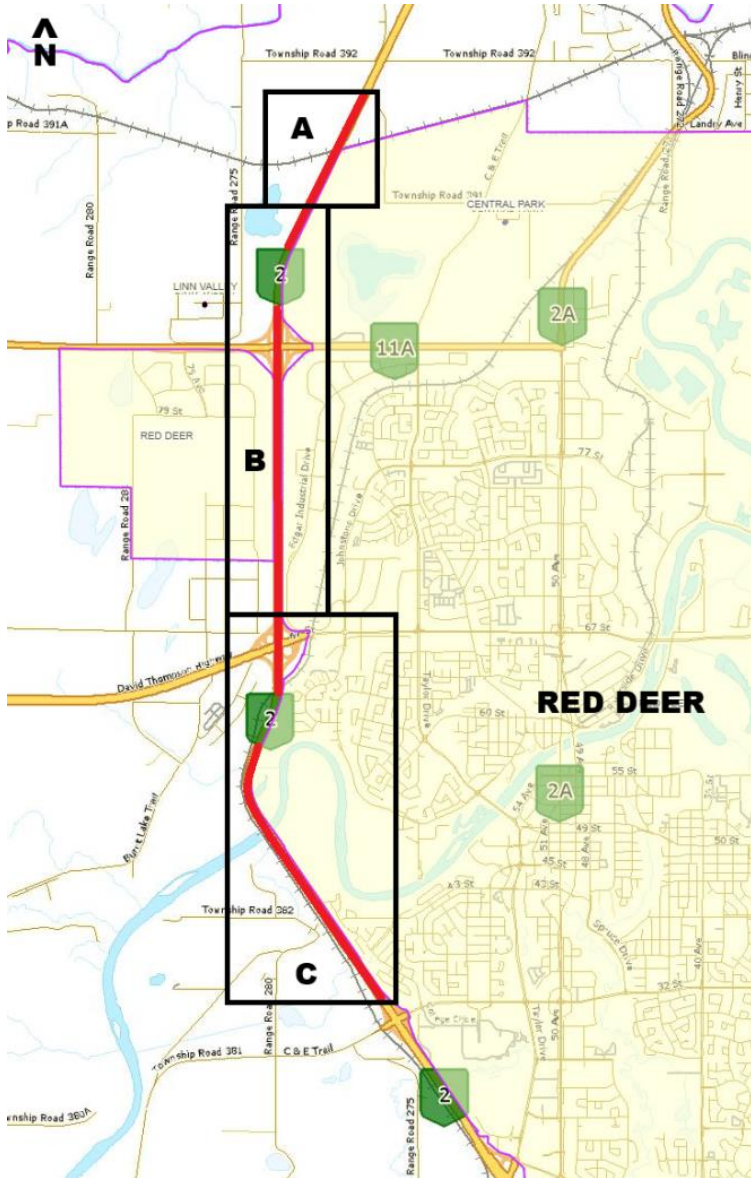
Hwy 2 Widening - Red Deer

Red Deer River Watershed Alliance

Meeting Purpose / Outline

- Recap & update of overall project
 - Including the finalized alignment
- What we've heard so far & how it was addressed
- Next steps
- Maintaining dialogue

Scope of the project



- **Section A:** Replacing the Overpass over the CN Railway Line (others)
- **Section B:** Widening of Existing 4 Lanes to 6 Lanes North of Highway 11 Interchange
- **Section C:** Widening of Existing 4 Lanes to 8 lanes (32 to 67 Street) & Replacing the Red Deer River Bridges

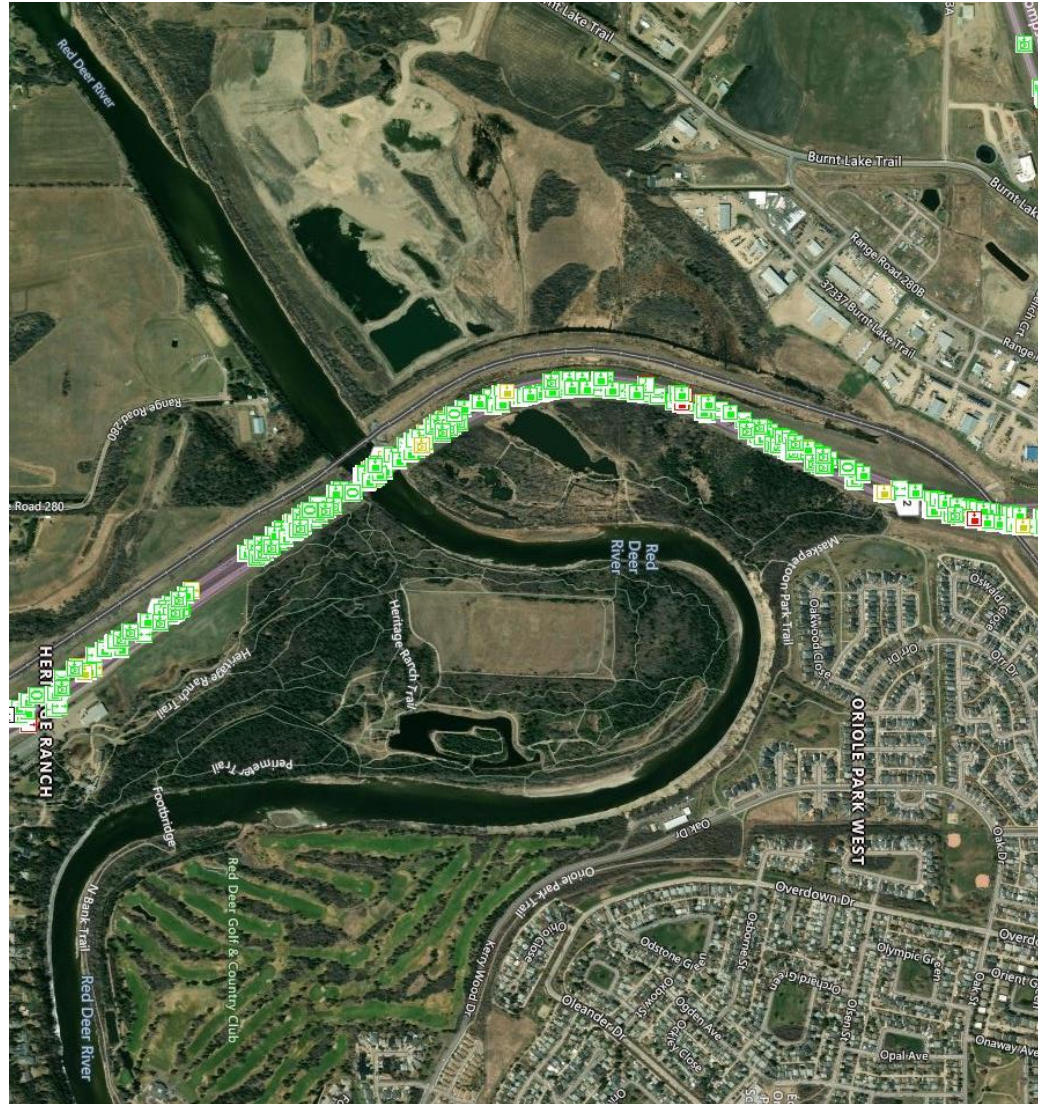
Focus today is on Section C

Project & Related Roles

Entity	Role
Government of Alberta	Owner
<ul style="list-style-type: none"> • Transportation and Economic Corridors (TEC) 	Project delivery; engineering standards
<ul style="list-style-type: none"> • Environment and Protected Areas 	Environmental conservation & protection standards
<ul style="list-style-type: none"> • Indigenous Relations (Aboriginal Consultation Office) 	Guidance/direction for Indigenous consultations
Government of Canada	
<ul style="list-style-type: none"> • Department of Fisheries and Oceans 	Fish & fish habitat protection / approvals
<ul style="list-style-type: none"> • Transport Canada – Navigable Waters 	Approval of in-stream works potentially affecting navigation
Associated Engineering	Owner's engineer: planning & design applying TEC standards
Mainroad Alberta Contracting	Highway maintenance

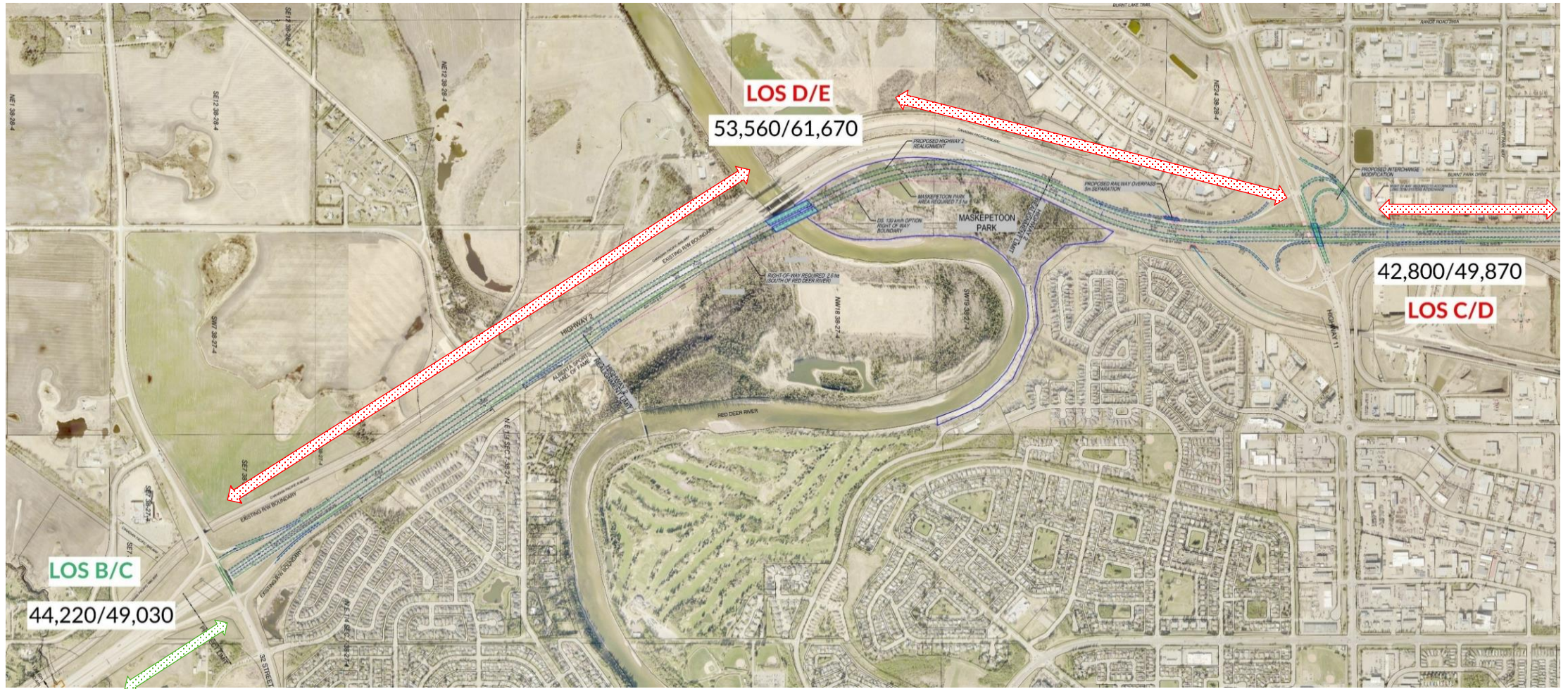
Reasons for the project – Public Safety

High accident rate –
related to current
geometry



Reasons for the project – Public Safety

Traffic volumes / level of service



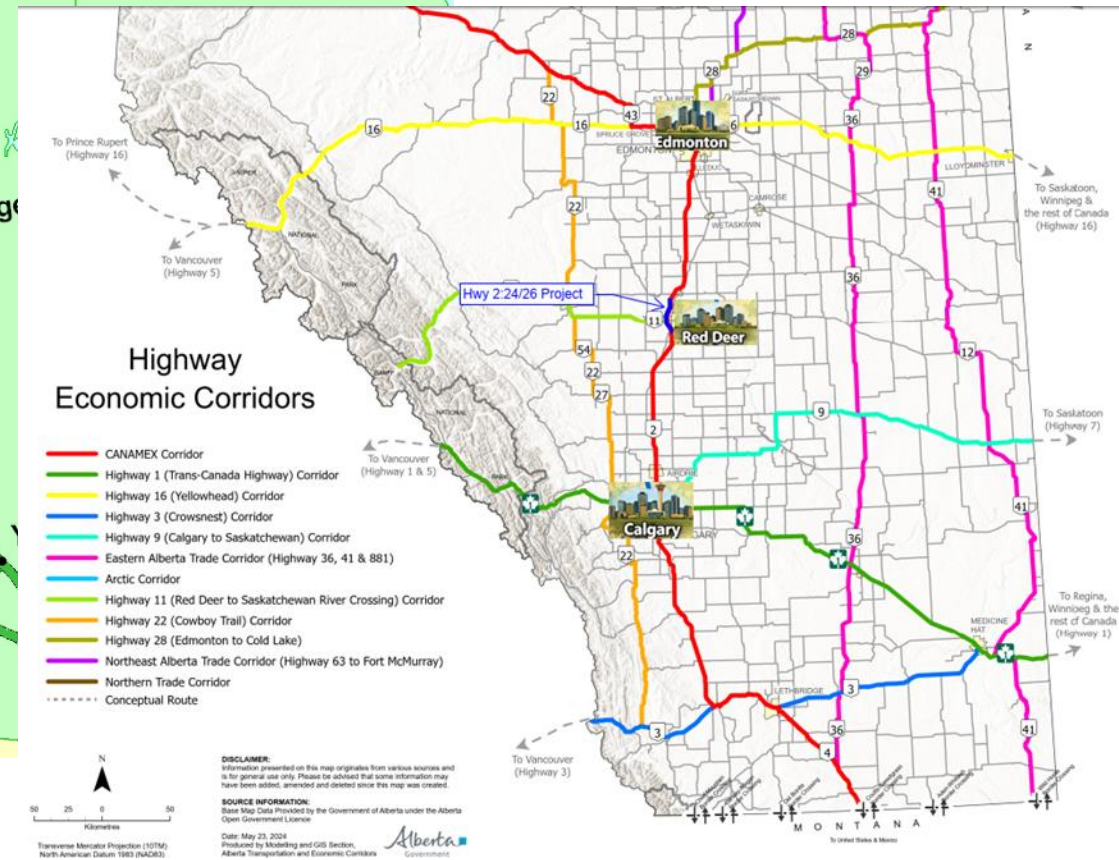
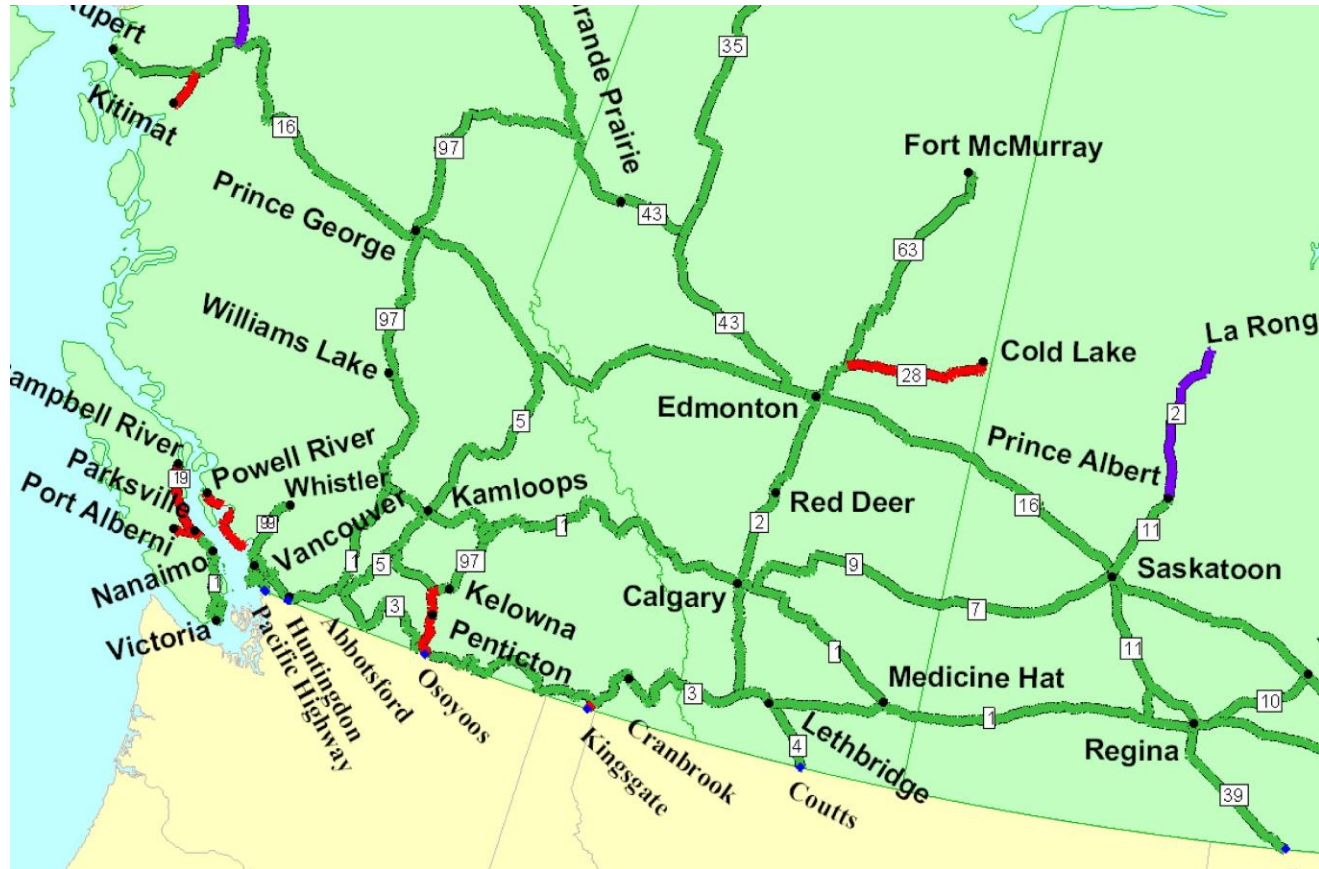
Reasons for the project – Public Safety

Aging infrastructure – Red Deer River Bridges

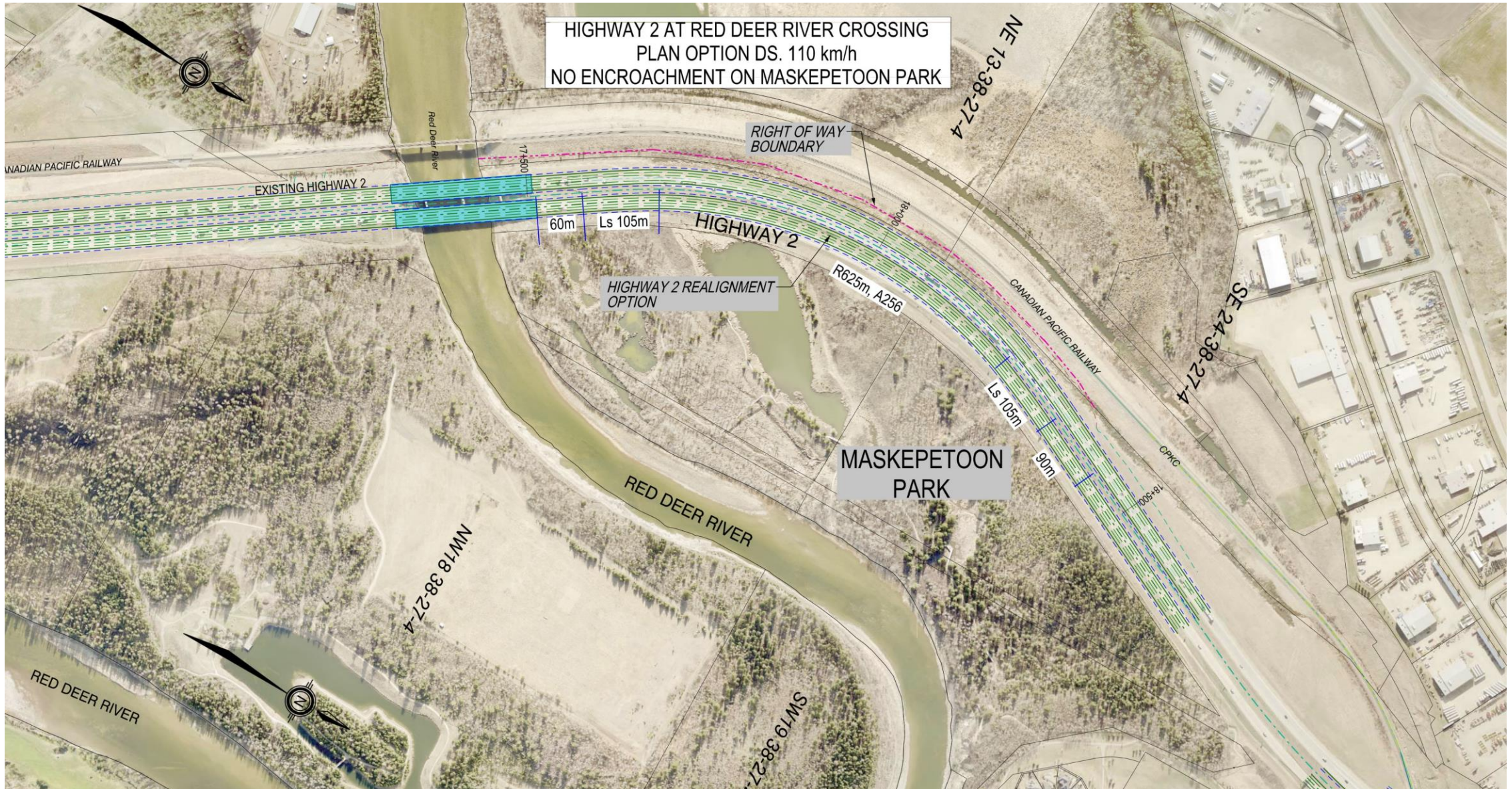


Reasons for the project – Economic Corridor

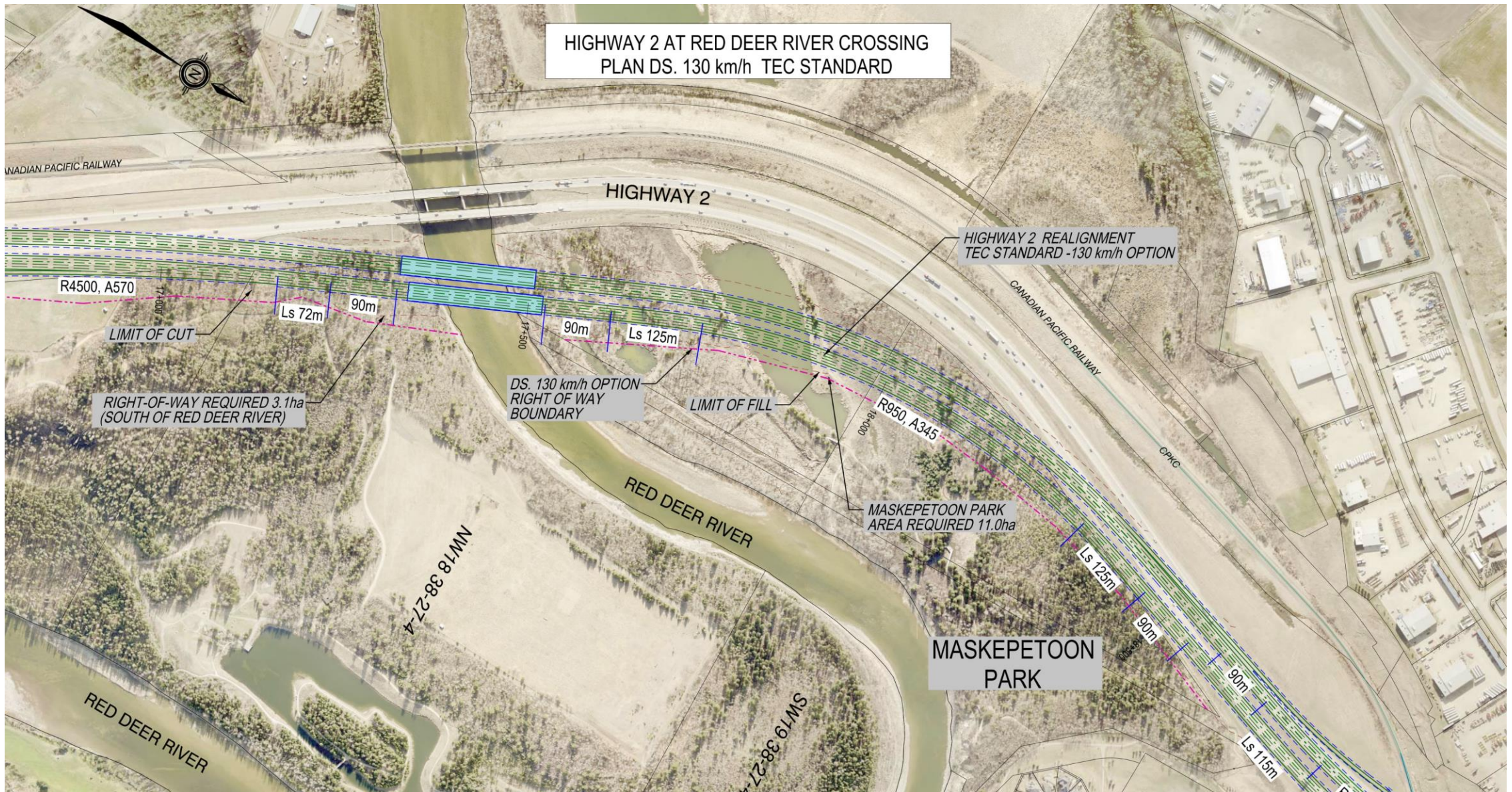
Most important highway corridor in Alberta



Alignment Option - Rejected



Re-Alignment Option – Optimal (Rejected)



What we've heard

- Questions about need & design parameters
- Protection / avoidance of sensitive areas
 - Maskepetoon Park
 - Nearby communities
- Consultation / engagement
- Consideration of alternatives
- Public supporting the need for highway improvements
- Minimize impact to environment & wildlife

Environmental Mitigations

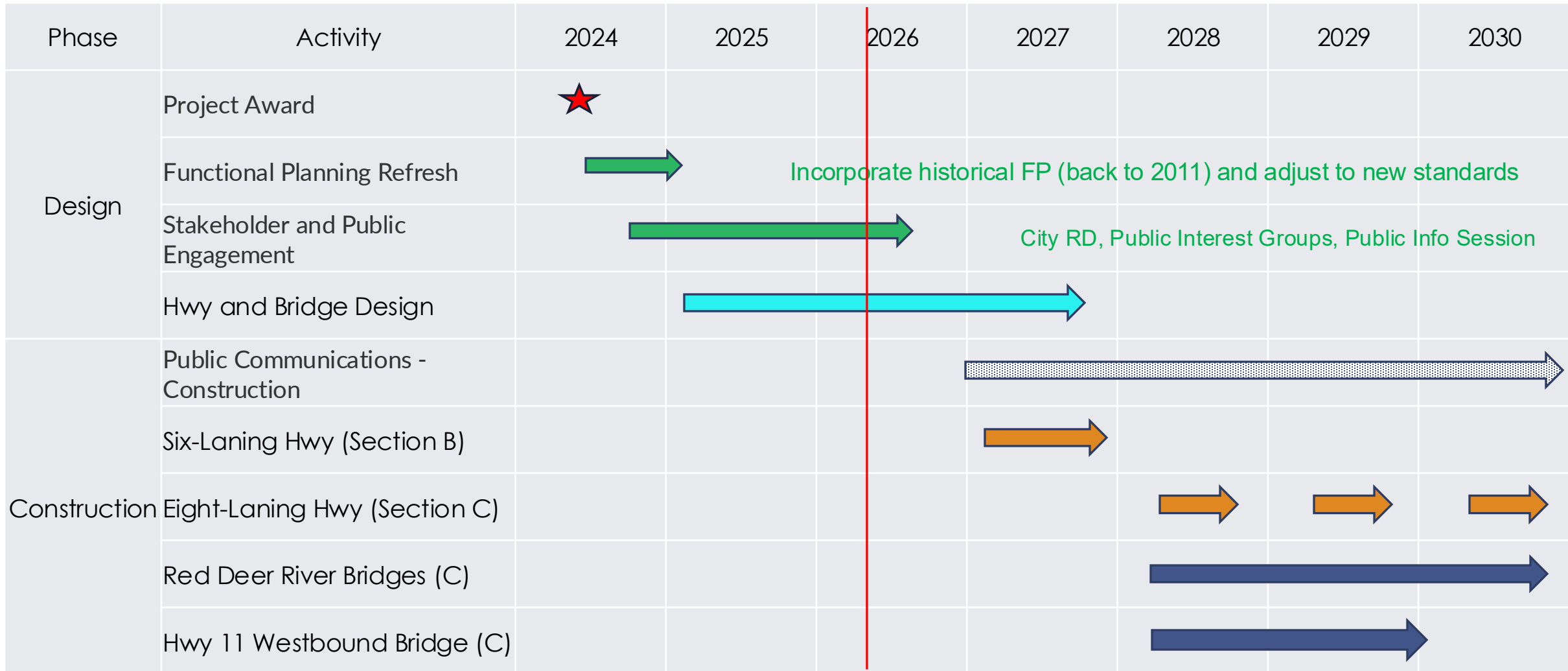
- Complete works outside of sensitive wildlife periods
- Minimizing impacts to natural wetlands, including shrubby swamp, anecdotally referred to as the “tamarack fen”
- Maintaining existing drainage patterns within the project area
- Incorporating wildlife passage into design including additional assessments on animal vehicle collision data

Environmental Mitigations - Continued

- Wetland compensation through in-lieu fee payment to the provincial wetland replacement program – Potentially to be used in City
- Minimize instream and riparian footprints of new bridges
- Fish habitat offsetting (to be determined with DFO)
- Indigenous Consultation

Project Phases and Timelines

We are here



Activity in 2026 / 2027

- Maskepetoon Park Geotechnical Drilling – Feb 2026
- Ongoing Engagement as necessary through design process
- Public Information session late spring / early summer 2026
- Six-Laning Tentative Construction Start – Early 2027
- Eight-Laning Design Completion – Mid Summer 2027



Questions / Discussion

Project Website: [Highway 2 improvements in the Red Deer area | Alberta.ca](https://www.alberta.ca/highway-2-improvements-in-the-red-deer-area.aspx)

Project Email: tec.hwy2reddeer@gov.ab.ca