

Red Deer River Watershed Alliance Update:



March 22, 2022

Francine Forrest, Executive Director

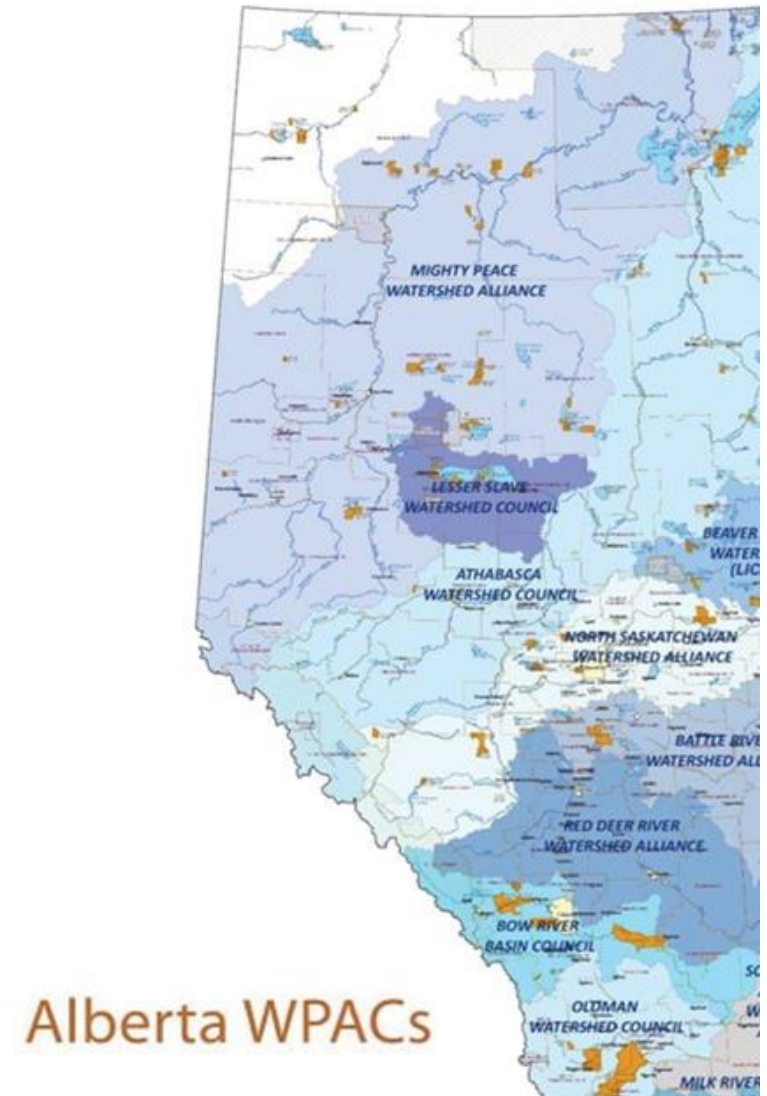


Red Deer River Watershed Alliance (RDRWA)

- One of 11 Watershed Planning and Advisory Councils (WPACs)
- Multi-sector, not-for-profit, science-based organization
- *Vision of a “healthy, dynamic and sustainable watershed through the efforts of the entire community”.*

Water for Life Goals:

- Safe, secure drinking water
- Healthy, aquatic ecosystems
- Reliable, quality water supplies for a growing economy

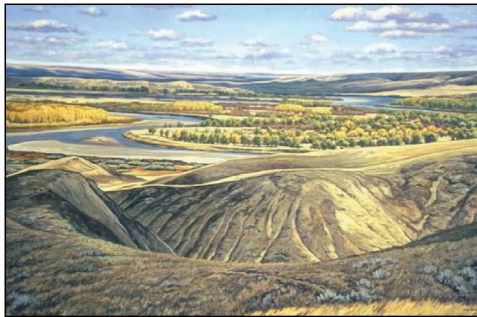


RDRWA: Roles and Mandate

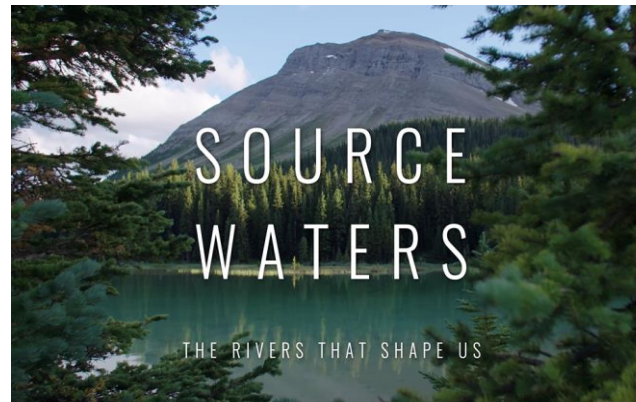
- State of Watershed Assessment & Reporting
- Watershed Planning



Red Deer River State of the Watershed Report



- Literacy & Education



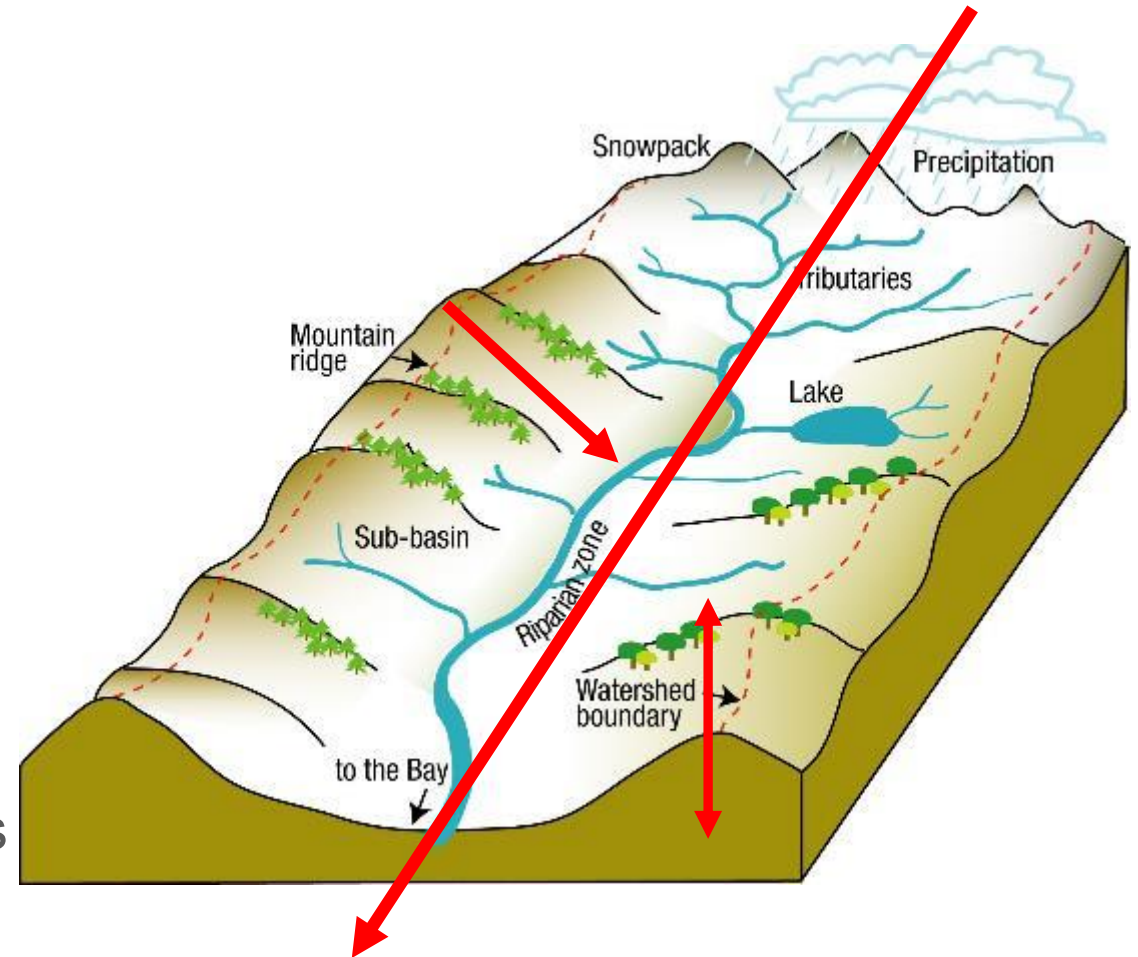
- Convenor & Collaborator



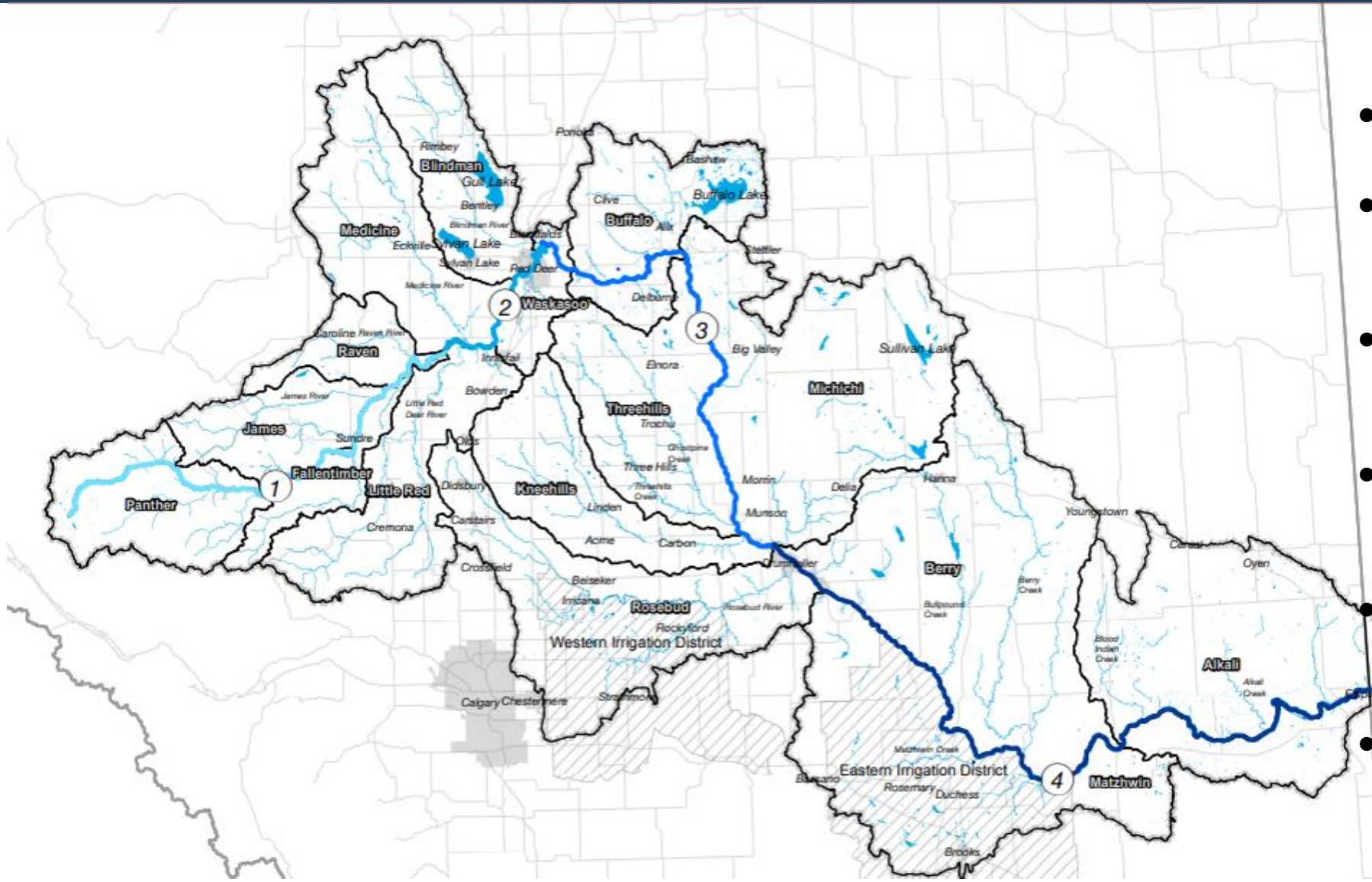
- Operations & Governance

“Alberta’s water resources must be managed within the capacity of individual watersheds.” (WFL)

- Watershed context:
 - Upstream – downstream
 - Highest to lowest
 - Surface water-groundwater interactions
- Includes tributaries, lakes, wetlands, aquifers, etc.
- Best geographic unit for understanding the cumulative impacts to Alberta’s water resources and changes over time



The Red Deer River Watershed



- Population: 300,000 people
- 74 urban & rural municipalities
- Banff National Park → Special Areas
- 53% agricultural footprint, with over 13,000 farms
- Over 130,000 oil and gas wells
- Highway 2 corridor

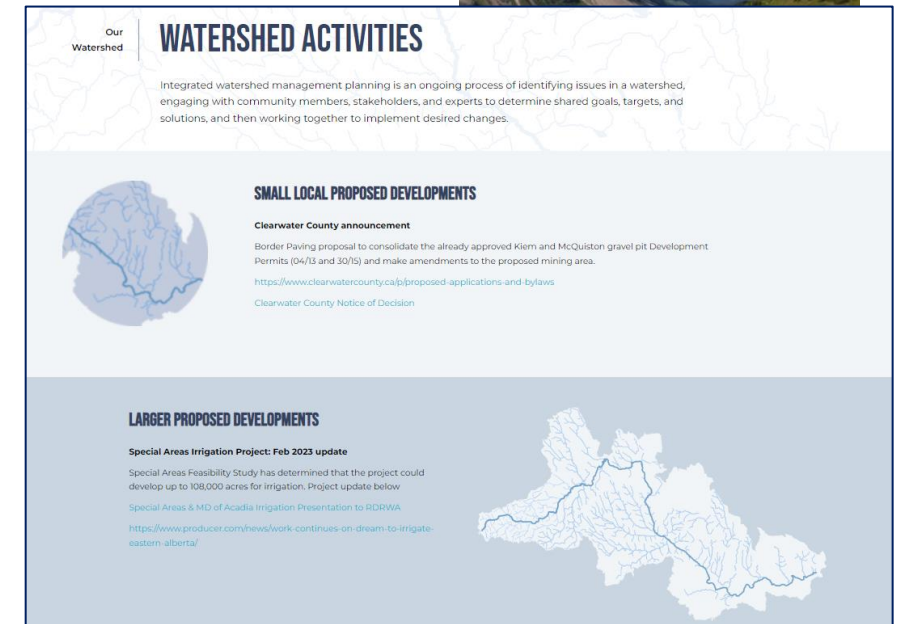
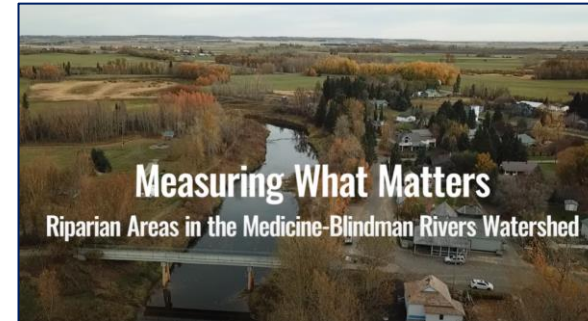
MRD - Operations & Governance

- Staff
 - 2 staff
 - Watershed project coordinator
 - 2 summer students
 - 2 SAIT Capstone students
- Planning
 - Strategic plan
 - Workplan/Budget
- Grant writing & reporting
 - EPA operational annual
 - WRRP
 - Ecotrust Grant proposal
- Governance Committee &
 - Board Recruitment Committee

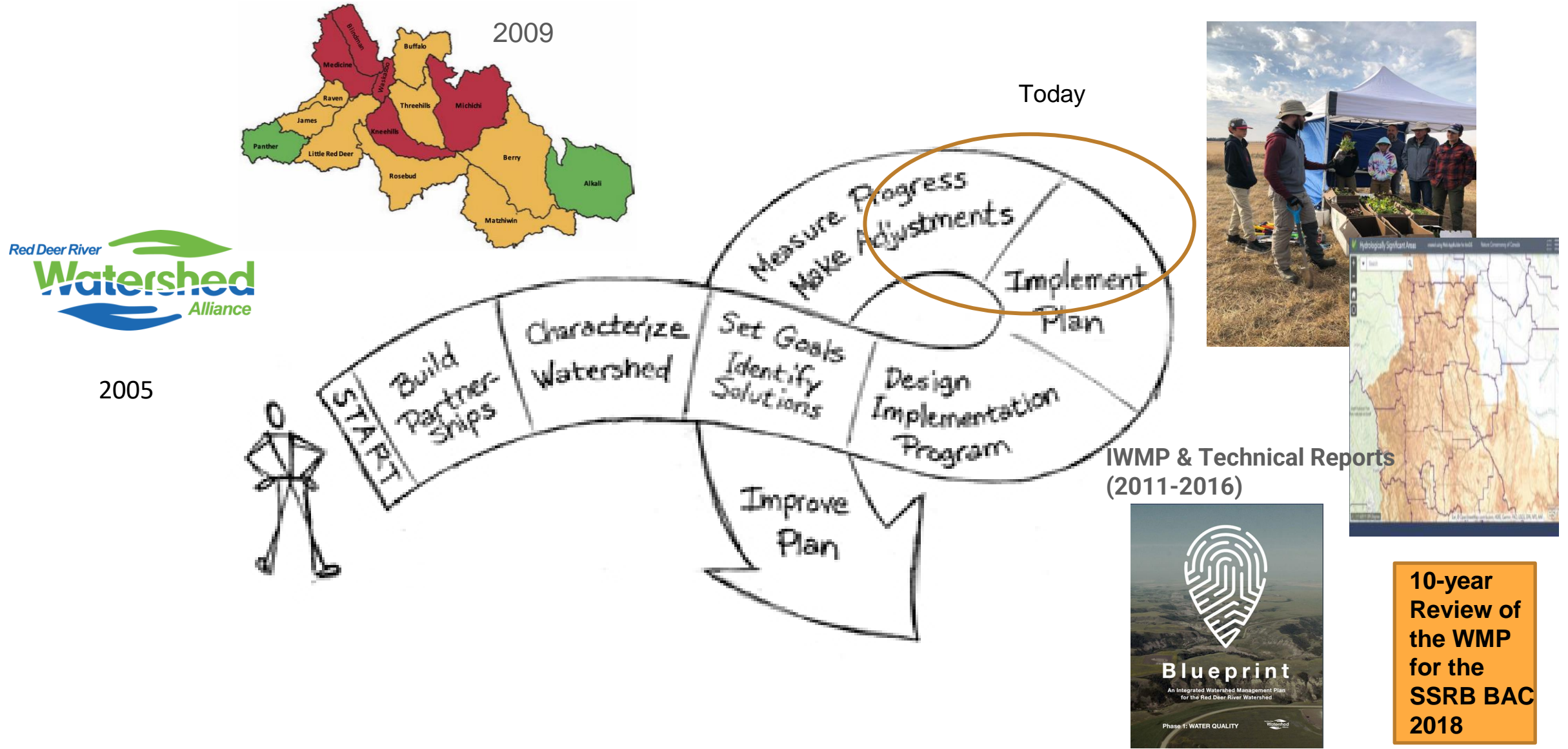


MRD - Education & Collaboration

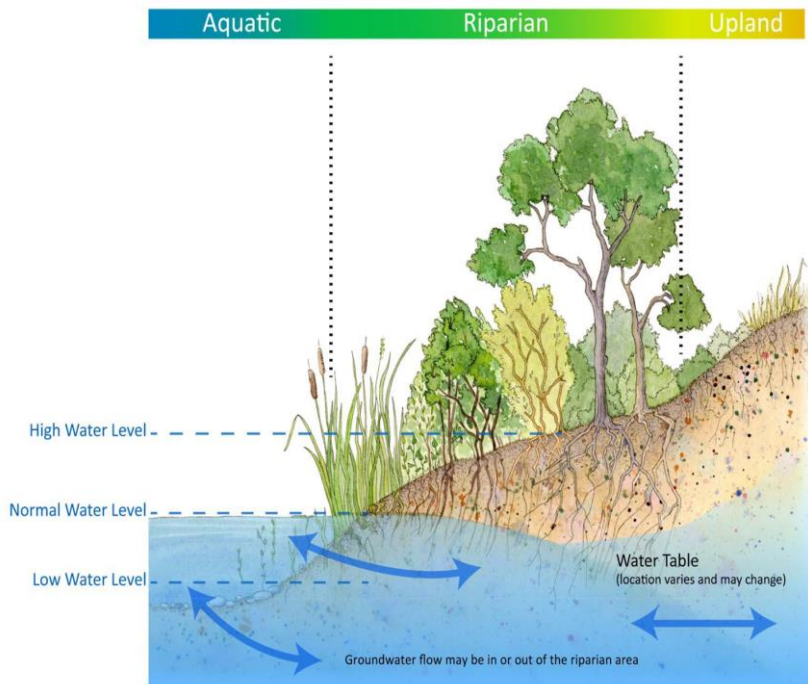
- 3 Major Events
- Outreach & Education Programs
- Videos & Resources
- E-Newsletters and Social Media



MRD - Watershed Assessment and Planning



Riparian Areas Provide Goods and Services



Goods and Services: Riparian areas benefit people and communities.



Affordable drinking water



Increased resiliency to flood and drought



Recreational, cultural or wildlife viewing opportunities



Livestock shelter, forage and grazing opportunities



Water storage



Groundwater well security



Hunting and angling opportunities



Erosion and sedimentation control

Riparian Health Project

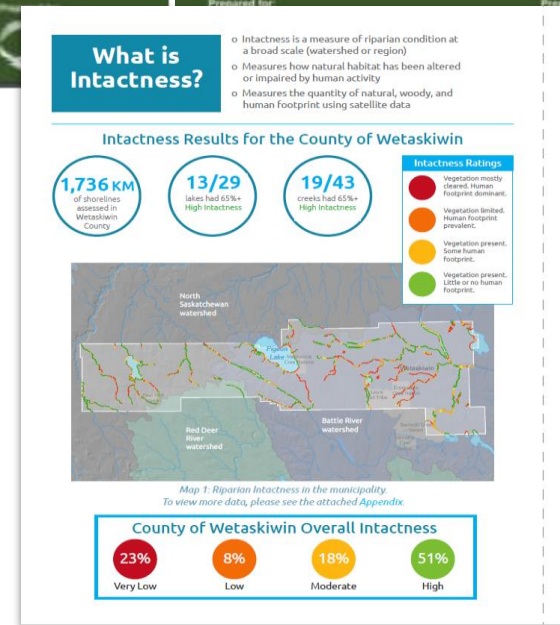
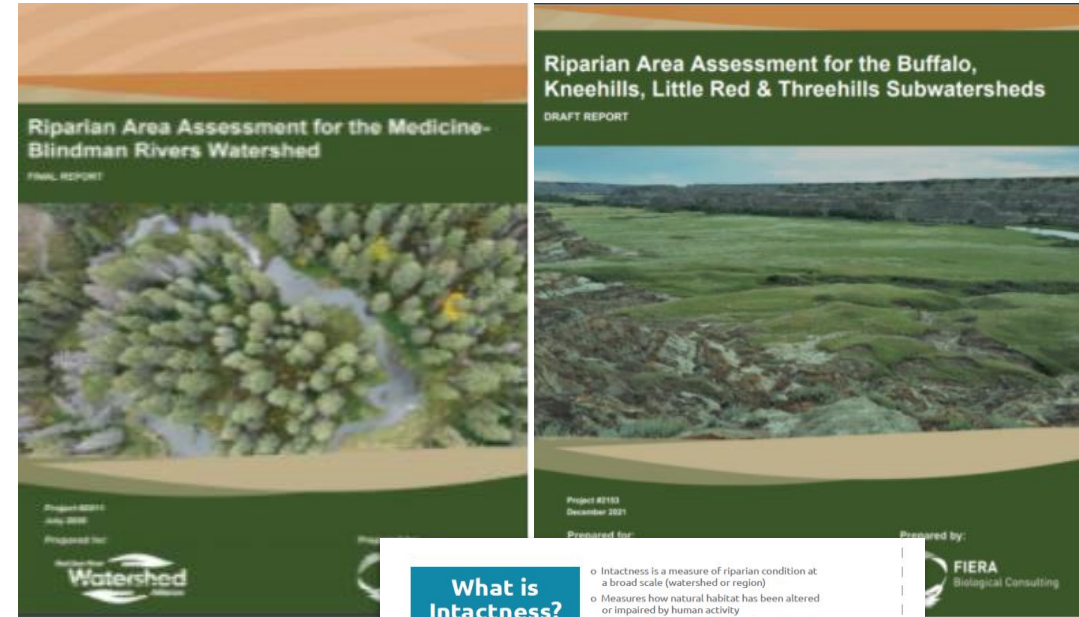
- Mapping completed for 7 subwatersheds
- Working to map: Rosebud, Raven and Michichi

Objectives:

- Identify 'baseline' conditions
- Prioritize riparian areas to focus conservation and restoration activities
- Engage with municipalities and partners to identify conservation and restoration opportunities

Progress of Activities:

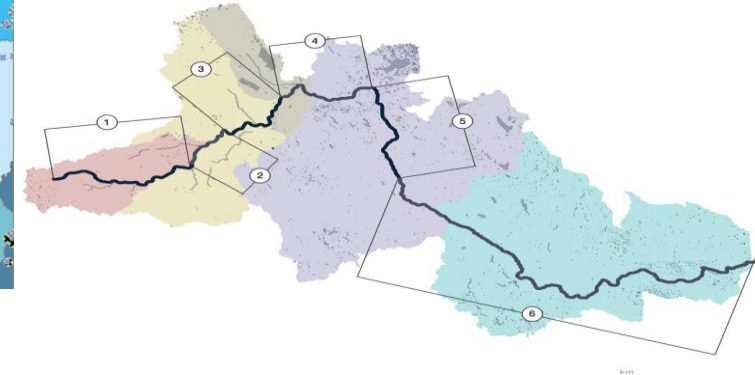
- *Mapping commenced*
- *Will be creating working group*



State of Watershed Update

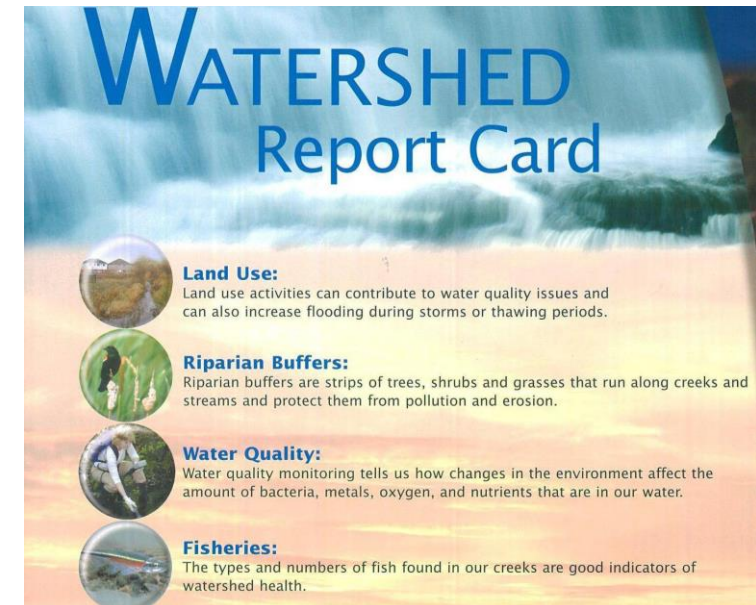
- Project Phases

- Technical Committee and Develop TOR
- Surface and GW water quality chapters
 - data inventory; data compilation and screening; assessment; reporting



- Benefit of Results

- Source water conditions for context and planning
- Identify areas to focus BMPs and education programs
- Step towards healthy watershed
- Collaboration across watershed - Opportunities to contribute



MRD - Partnership & Collaboration

Provincial

- WPAC – SOW TAC and Outreach and Education work

Regional

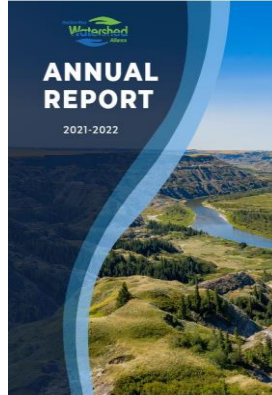
- Intrabasin Water Coordinating Committee – quantity discussion
- South Saskatchewan Region Operational Model SSROM- quantity model
- AB Innovates Grant - Shallow GW quality study
- CABIN – biomonitoring model proposal for ecosystem health assessment tool
- EPA - Surface water quality framework for the mainstem LTRN - 2023

Local

- Municipalities and counties (Rosebud, Raven, Michichi)
- WSGs -Medicine River Watershed Society – students & support

Summary

- Regional Resource
- Convenor & Collaborator
 - AGM June 22
- Education and Water Literacy
 - [E-News](#) & [Events](#)
 - Website Materials www.rdrwa.ca
- Watershed Assessment and Planning
 - Riparian mapping and restoration
 - SOW TOR and WQ update
- Operations and Governance
 - Continue to build the RDRWA team, committees and partnerships



Acknowledgements



- Special Areas Board
- Lacombe County
- Village of Beiseker
- Wheatland County
- Mountain View County
- Village of Halkirk
- Village of Delia
- Town of Trochu
- Red Deer County
- Starland County
- Town of Oyen
- County of Newell
- Town of Blackfalds
- Town of Stettler
- Clearwater County
- Town of Sundre
- Town of Bentley
- Summer Villages of
Sylvan Lake : Jarvis Bay, Half
Moon Bay, Norglenwold,
Birchcliff and Sunbreaker
Cove

Nova Chemicals

Fiscal year

Keep In Touch

Sign up for our monthly e-newsletter

- www.rdrwa.ca

Social media

- Facebook & Twitter (@RDRWA)

Upcoming Events

- RDRWA Casino May 29 & 30
- AGM June 22
- Events Calendar

Contact us

- info@rdrwa.ca

